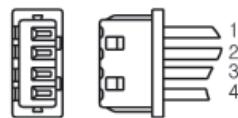
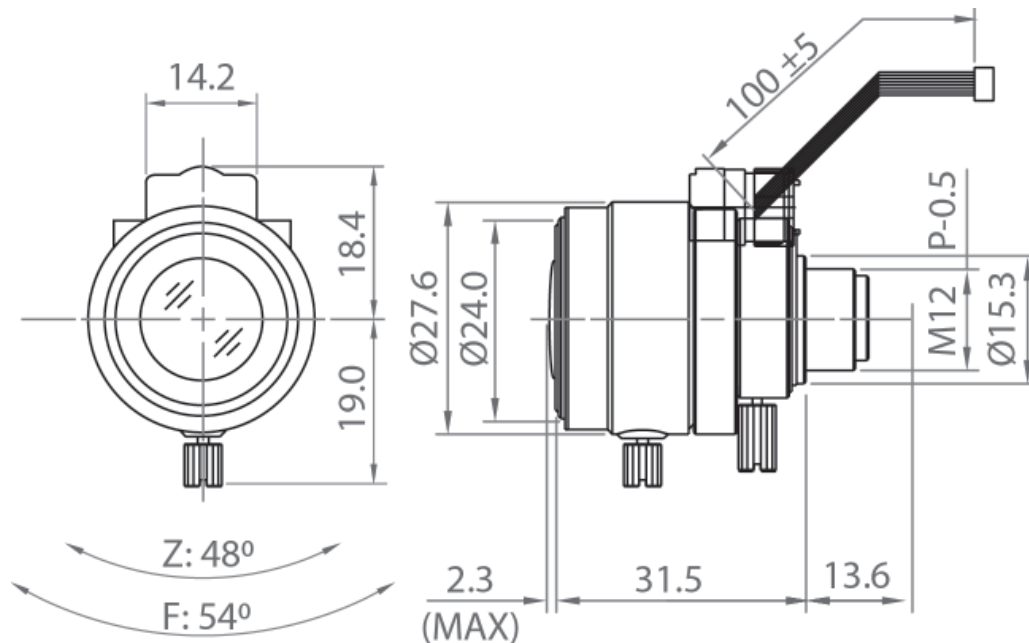


Technical Specifications

Sensing Area		1/4"	1/3"
Focal Length		4.0mm - 9mm	
Back Focal Length		6.6mm - 10.8mm	
Aperture		F1.5	
Field of View	Diagonal	63.5° ~ 30.1°	86.2° ~ 40.2°
	Horizontal	50.2° ~ 24.1°	68.0° ~ 32.1°
	Vertical	37.3° ~ 18.0°	50.2° ~ 24.1°
Operation	Iris	DC Auto	
	Focus	Manual	
	Zoom	Manual	
Minimum Object Distance		50cm	
Mount		M-12	
Dimensions (D x L)		Ø27.6mm x 33.8mm	
Weight		24g	



1	RED	CONTROL (+)
2	BROWN	CONTROL (-)
3	YELLOW	DRIVE (+)
4	ORANGE	DRIVE (-)